



# STATALE9

60x120

60x60

20x120

CONCRETE

20x120

15x120

WOOD

# STATALE9







**MIX PROJECT**  
601S8R GRIGIO CEMENTO WET 60X60 (23<sup>5/8</sup>"x23<sup>5/8</sup>")  
601R8R GRIGIO CEMENTO WORK 60X60 (23<sup>5/8</sup>"x23<sup>5/8</sup>")  
601M8R GRIGIO CEMENTO TEXTURE 60X60 (23<sup>5/8</sup>"x23<sup>5/8</sup>")



981R8R GRIGIO CEMENTO WORK 60X120 (23<sup>3</sup>/<sub>8</sub>"x47<sup>1</sup>/<sub>4</sub>") - 530D9R FUMO 15X120 (57<sup>8</sup>/<sub>8</sub>"x47<sup>1</sup>/<sub>4</sub>")





314  
30048752

I've  
Thinkin  
am

la casa del  
futuro  
Pérez

601SOR BIANCO CALCE WET 60X60 (23" x 23") - 541SOR STREET BIANCO CALCE 20X120 (77" x 47")





31400  
300487522195  
M

STREET  
ART  
MURALS

STREET  
ART  
MURALS



981M8R GRIGIO CEMENTO TEXTURE 60X120 (23<sup>5/8</sup> x 47<sup>1/4</sup>)





540D3R PAGLIA 20x120 (77<sup>8</sup>/<sub>16</sub> x 47<sup>14</sup>/<sub>16</sub>) - 530D3R PAGLIA 15x120 (57<sup>8</sup>/<sub>16</sub> x 47<sup>14</sup>/<sub>16</sub>)  
530D3RB PAGLIA METROPOLI 15x120 (57<sup>8</sup>/<sub>16</sub> x 47<sup>14</sup>/<sub>16</sub>)





530D8R VAPORE 15X120 (57"8 x 47"4)  
540D8R VAPORE 20X120 (77"8 x 47"4)





530D9R FUMO 15X120 (5'8" x 47"1/4")  
530D9RB METROPOLI FUMO 15X120 (5'8" x 47"1/4")





VAPORE - METROPOLI VAPORE



981M8R GRIGIO CEMENTO TEXTURE 60X120 (23<sup>5/8</sup> x 47<sup>1/4</sup>) - 540D8R VAPORE 20X120 (7<sup>7/8</sup> x 47<sup>1/4</sup>)



530DOR ARIA 15x120 (57<sup>8</sup> x 47<sup>1</sup>/<sub>4</sub>)  
530DORB ARIA METROPOLI 15x120 (57<sup>8</sup> x 47<sup>1</sup>/<sub>4</sub>)





HEY, ARE YOU  
FOLLOWING  
YOUR INSTINCT?










981SOR BIANCO CALCE WET 60X120 (23<sup>5/8</sup> x 47<sup>1/4</sup>)  
530D8R VAPORE 15X120 (57<sup>8/8</sup> x 47<sup>1/4</sup>)  
530D8RB METROPOLI VAPORE 15X120 (57<sup>8/8</sup> x 47<sup>1/4</sup>)

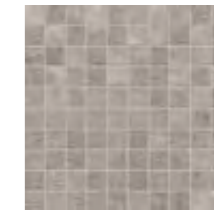
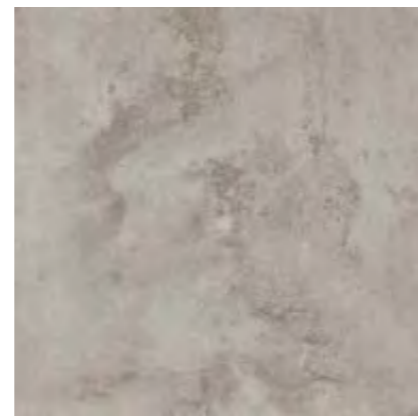
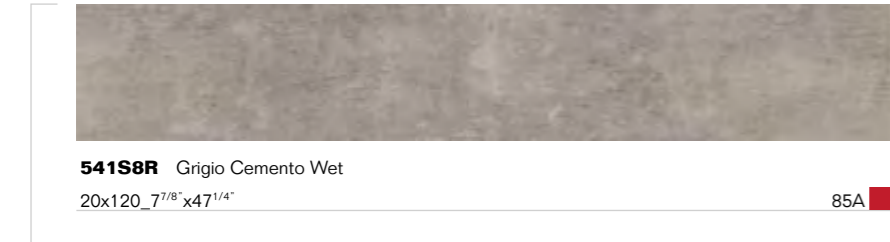
PIET HEIN EEK dutchtub



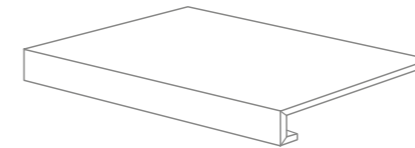




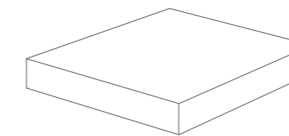
SOMETIMES  
LEAVE  
AND LET  
YOUR  
BRAIN  
BREATHE



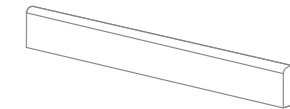
**Pezzi speciali** TRIMS / PIECES SPECIALES / FORMTEILE / PIEZAS ESPECIALES / СПЕЦИАЛЬНЫЕ ИЗДЕЛИЯ



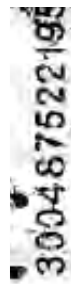
**GRADONE - STEP**  
**711M8RG** Grigio Cemento Texture  
**711R8RG** Grigio Cemento Work  
**711S8RG** Grigio Cemento Wet  
 33x60x3,2x3,2\_12<sup>15/16</sup> x23<sup>5/8</sup> x1<sup>1/4</sup> x1<sup>1/4</sup>  
 PCS. BOX 4 82



**ANGOLARE - CORNER TILE**  
**711M8CRA** Grigio Cemento Texture  
**711R8CRA** Grigio Cemento Work  
**711S8CRA** Grigio Cemento Wet  
 33x33x3,2x3,2\_12<sup>15/16</sup> x12<sup>15/16</sup> x1<sup>1/4</sup> x1<sup>1/4</sup>  
 PCS. BOX 2 86



**BATTISCOPA - SKIRTING**  
**871M8R** Grigio Cemento Texture  
**871R8R** Grigio Cemento Work  
**871S8R** Grigio Cemento Wet  
 7,5x60\_2<sup>15/16</sup> x23<sup>5/8</sup>  
 PCS. BOX 15 10





**541S0R** Bianco Calce Wet  
20x120\_7<sup>7/8</sup> x47<sup>1/4</sup>"

85A



**981S0R** Bianco Calce Wet  
60x120\_23<sup>5/8</sup> x47<sup>1/4</sup>"

84



**601S0R** Bianco Calce Wet  
60x60\_23<sup>5/8</sup> x23<sup>5/8</sup>"

76



**981R0R** Bianco Calce Work  
60x120\_23<sup>5/8</sup> x47<sup>1/4</sup>"

84



**601R0R** Bianco Calce Work  
60x60\_23<sup>5/8</sup> x23<sup>5/8</sup>"

76



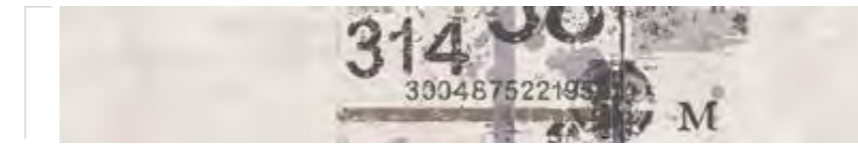
**981M0R** Bianco Calce Texture  
60x120\_23<sup>5/8</sup> x47<sup>1/4</sup>"

84



**601M0R** Bianco Calce Texture  
60x60\_23<sup>5/8</sup> x23<sup>5/8</sup>"

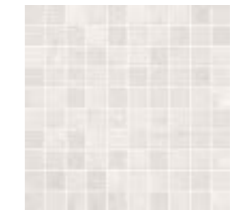
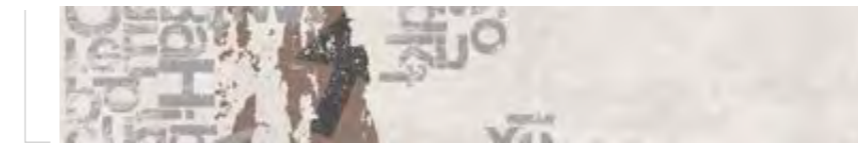
76



**541S0RS** Bianco Calce Street  
20x120\_7<sup>7/8</sup> x47<sup>1/4</sup>"  
PCS. BOX 3

82

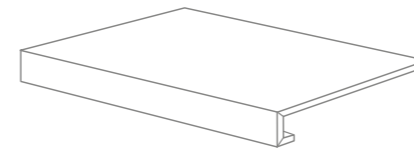
STREET



**I301M0R** Mosaico Bianco Calce Mix  
30x30\_11<sup>13/16</sup> x11<sup>13/16</sup>"

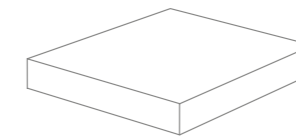
97

**Pezzi speciali** TRIMS / PIECES SPECIALES / FORMTEILE / PIEZAS ESPECIALES / СПЕЦИАЛЬНЫЕ ИЗДЕЛИЯ



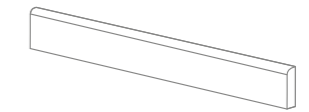
**GRADONE - STEP**  
**711M0RG** Bianco Calce Texture  
**711R0RG** Bianco Calce Work  
**711S0RG** Bianco Calce Wet  
33x60x3,2x3,2\_12<sup>15/16</sup> x23<sup>5/8</sup> x1<sup>1/4</sup> x1<sup>1/4</sup>"  
PCS. BOX 4

82



**ANGOLARE - CORNER TILE**  
**71M0CRA** Bianco Calce Texture  
**71R0CRA** Bianco Calce Work  
**71S0CRA** Bianco Calce Wet  
33x33x3,2x3,2\_12<sup>15/16</sup> x12<sup>15/16</sup> x1<sup>1/4</sup> x1<sup>1/4</sup>"  
PCS. BOX 2

86



**BATTISCOPA - SKIRTING**  
**871M0R** Bianco Calce Texture  
**871R0R** Bianco Calce Work  
**871S0R** Bianco Calce Wet  
7,5x60\_2<sup>15/16</sup> x23<sup>5/8</sup>"  
PCS. BOX 15

10

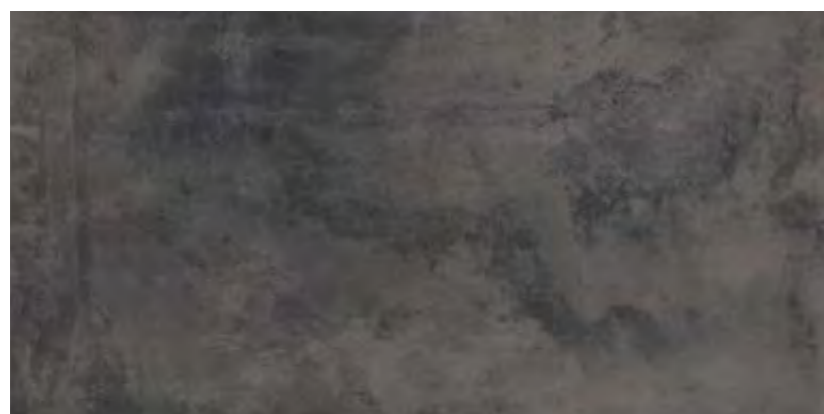


WET



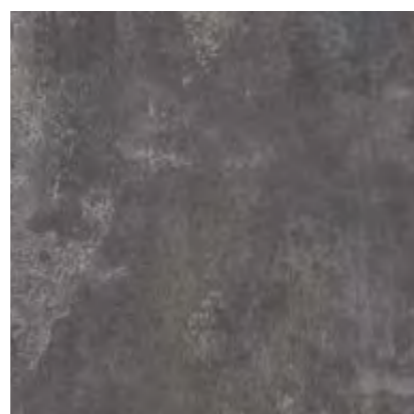
**541S9R** Nero Carbone Wet  
20x120\_7<sup>7/8</sup>"x47<sup>1/4</sup>"

85A



**981S9R** Nero Carbone Wet  
60x120\_23<sup>5/8</sup>"x47<sup>1/4</sup>"

84



**601S9R** Nero Carbone Wet  
60x60\_23<sup>5/8</sup>"x23<sup>5/8</sup>"

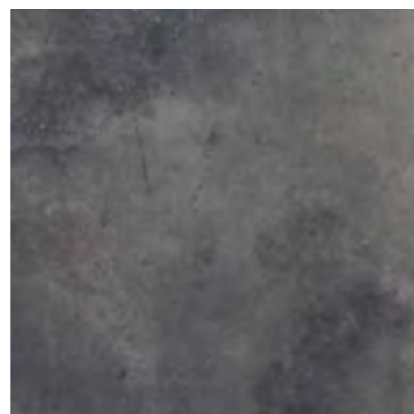
76

WORK



**981R9R** Nero Carbone Work  
60x120\_23<sup>5/8</sup>"x47<sup>1/4</sup>"

84



**601R9R** Nero Carbone Work  
60x60\_23<sup>5/8</sup>"x23<sup>5/8</sup>"

76

TEXTURE



**981M9R** Nero Carbone Texture  
60x120\_23<sup>5/8</sup>"x47<sup>1/4</sup>"

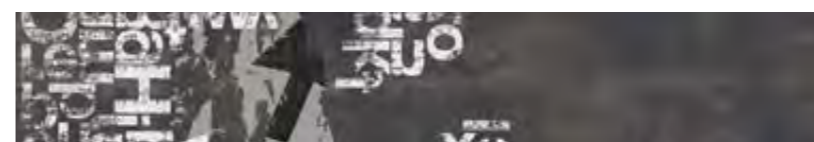
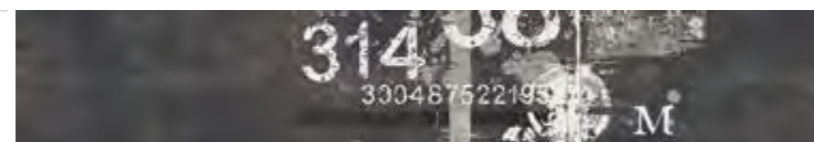
84



**601M9R** Nero Carbone Texture  
60x60\_23<sup>5/8</sup>"x23<sup>5/8</sup>"

76

STREET



**541S9RS** Nero Carbone Street  
20x120\_7<sup>7/8</sup>"x47<sup>1/4</sup>"  
PCS. BOX 3

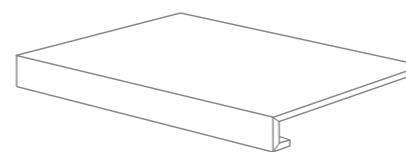
82



**I301M9R** Mosaico Nero Carbone Mix  
30x30\_11<sup>13/16</sup>"x11<sup>13/16</sup>"

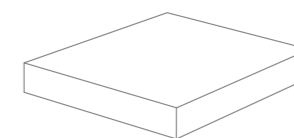
97

**Pezzi speciali** TRIMS / PIECES SPECIALES / FORMTEILE / PIEZAS ESPECIALES / СПЕЦИАЛЬНЫЕ ИЗДЕЛИЯ



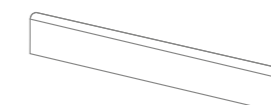
GRADONE - STEP  
**711M9RG** Nero Carbone Texture  
**711R9RG** Nero Carbone Work  
**711S9RG** Nero Carbone Wet  
33x60x3,2x3,2\_12<sup>15/16</sup>"x23<sup>5/8</sup>"x1<sup>1/4</sup>"x1<sup>1/4</sup>"  
PCS. BOX 4

82



ANGOLARE - CORNER TILE  
**71M9CRA** Nero Carbone Texture  
**71R9CRA** Nero Carbone Work  
**71S9CRA** Nero Carbone Wet  
33x33x3,2x3,2\_12<sup>15/16</sup>"x12<sup>15/16</sup>"x1<sup>1/4</sup>"x1<sup>1/4</sup>"  
PCS. BOX 2

86



BATTISCOPA - SKIRTING  
**871M9R** Nero Carbone Texture  
**871R9R** Nero Carbone Work  
**871S9R** Nero Carbone Wet  
7,5x60\_2<sup>15/16</sup>"x23<sup>5/8</sup>"  
PCS. BOX 15

10

WET 40% / WORK 40% / TEXTURE 20%





300487522193

M

314

314

FUMO

**Formati  
Decori**

SIZES / FORMATS / FORMATE / TAMAÑOS / ФОРМАТЫ  
DECORS / DECORS / DECORE / DECORADOS / ДЕКОРЫ

LEGNI



**540D0R** Aria  
20x120\_7<sup>7</sup>/<sub>8</sub>"x47<sup>1</sup>/<sub>4</sub>"

85A



**530D0R** Aria  
15x120\_5<sup>7</sup>/<sub>8</sub>"x47<sup>1</sup>/<sub>4</sub>"

85A

LEGNI



**540D3R** Paglia  
20x120\_7<sup>7</sup>/<sub>8</sub>"x47<sup>1</sup>/<sub>4</sub>"

85A



**530D3R** Paglia  
15x120\_5<sup>7</sup>/<sub>8</sub>"x47<sup>1</sup>/<sub>4</sub>"

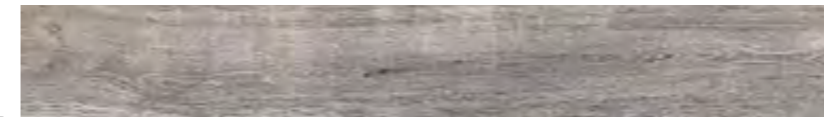
85A

LEGNI



**540D8R** Vapore  
20x120\_7<sup>7</sup>/<sub>8</sub>"x47<sup>1</sup>/<sub>4</sub>"

85A



**530D8R** Vapore  
15x120\_5<sup>7</sup>/<sub>8</sub>"x47<sup>1</sup>/<sub>4</sub>"

85A

LEGNI



**540D9R** Fumo  
20x120\_7<sup>7</sup>/<sub>8</sub>"x47<sup>1</sup>/<sub>4</sub>"

85A

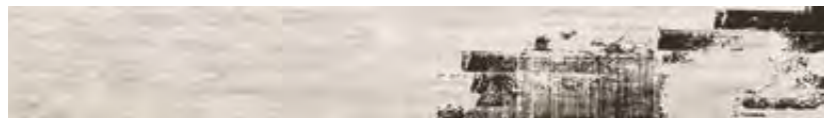


**530D9R** Fumo  
15x120\_5<sup>7</sup>/<sub>8</sub>"x47<sup>1</sup>/<sub>4</sub>"

85A



METROPOLI



**530D0RB** Aria Metropoli  
 15x120\_5<sup>7</sup>/<sub>8</sub>" x 47<sup>1</sup>/<sub>4</sub>"  
 PCS. BOX 4

82

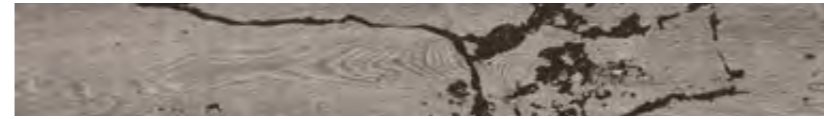
METROPOLI



**530D3RB** Paglia Metropoli  
 15x120\_5<sup>7</sup>/<sub>8</sub>" x 47<sup>1</sup>/<sub>4</sub>"  
 PCS. BOX 4

82

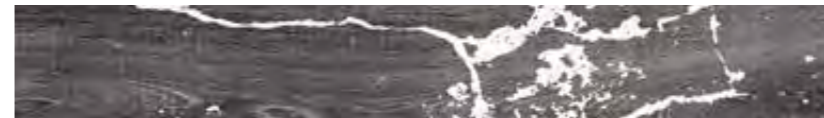
METROPOLI



**530D8RB** Vapore Metropoli  
 15x120\_5<sup>7</sup>/<sub>8</sub>" x 47<sup>1</sup>/<sub>4</sub>"  
 PCS. BOX 4

82

METROPOLI



**530D9RB** Fumo Metropoli  
 15x120\_5<sup>7</sup>/<sub>8</sub>" x 47<sup>1</sup>/<sub>4</sub>"  
 PCS. BOX 4

82







**530D8RC** Vapore Lime Metropoli  
15x120\_5<sup>7/8</sup>" x 47<sup>1/4</sup>"  
PCS. BOX 4

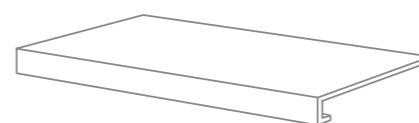
82



**530D9RC** Fumo Orange Metropoli  
15x120\_5<sup>7/8</sup>" x 47<sup>1/4</sup>"  
PCS. BOX 4

82

**Pezzi Speciali** TRIMS - PIECES SPECIALES - FORMTEILE - PIEZAS ESPECIALES - СПЕЦИАЛЬНЫЕ ИЗДЕЛИЯ



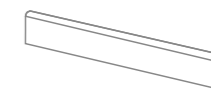
**GRADONE** - STEP  
33x120x3,2x3,2 - 12<sup>15/16</sup>"x47<sup>1/4</sup>"x1<sup>1/4</sup>"x1<sup>1/4</sup>"  
**CR0D0R** Aria Nat. Rett.  
**CR0D3R** Paglia Nat. Rett.  
**CR0D8R** Vapore Nat. Rett.  
**CR0D9R** Fumo Nat. Rett.  
PCS. BOX. 2

96



**ANGOLARE** - CORNER TILE DX / SX  
33x33x3,2x3,2 - 12<sup>15/16</sup>"x12<sup>15/16</sup>"x1<sup>1/4</sup>"x1<sup>1/4</sup>"  
**A0D0CRD / A0D0CRS** Aria Nat. Rett.  
**A0D3CRD / A0D3CRS** Paglia Nat. Rett.  
**A0D8CRD / A0D8CRS** Vapore Nat. Rett.  
**A0D9CRD / A0D9CRS** Fumo Nat. Rett.  
PCS. BOX. 2

86



**BATTISCOPA** - SKIRTING  
7,5x60 - 2<sup>15/16</sup>"x23<sup>5/8</sup>"  
**870D0R** Aria Nat. Rett.  
**870D3R** Paglia Nat. Rett.  
**870D8R** Vapore Nat. Rett.  
**870D9R** Fumo Nat. Rett.  
PCS. BOX. 15

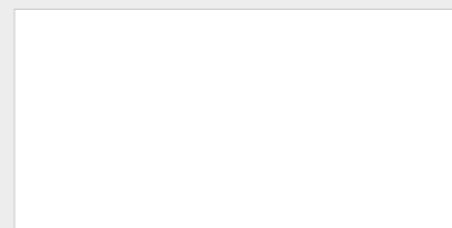
10

# AntiSlip

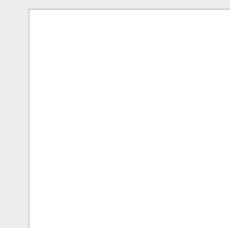
## R11 - B (A+B)

\*Prodotto antiscivolo adatto a tutte le applicazioni interne ed esterne

**WET - WORK - TEXTURE**



60x120\_23<sup>5/8</sup>" x 47<sup>1/4</sup>" **Grigio - Bianco - Nero**



60x60\_23<sup>5/8</sup>" x 23<sup>5/8</sup>" **Grigio - Bianco - Nero**

**WET**

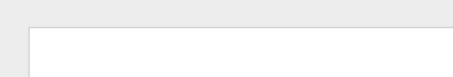


20x120\_7<sup>7/8</sup>" x 47<sup>1/4</sup>" **Grigio - Bianco - Nero**

**LEGNI**



20x120\_7<sup>7/8</sup>" x 47<sup>1/4</sup>" **Aria - Paglia - Vapore - Fumo**



15x120\_5<sup>7/8</sup>" x 47<sup>1/4</sup>" **Aria - Paglia - Vapore - Fumo**

\* Anti-slip product which is suitable for all internal and external applications. - Produit antidérapant spécialement conçu pour toute application à l'intérieur et à l'extérieur. - Anti-Rutsch-Produkt, geeignet für alle Innen- und Außenanwendungen. - Producto antideslizante apto para todas las aplicaciones, en interiores y exteriores. - Нескользящий материал, пригодный для всех внутренних и внешних покрытий.

CARATTERISTICHE TECNICHE Technical Features - Características Técnicas - Technische Eigenschaften Technische Eigenschaften - Características Técnicas - Технические Характеристики	NORMA Standard - Norme Norm - Norma - Норма	VALORI Value - Valeur Vorgabe - Valor - Средние						
<b>PLANARITÀ</b> Flatness - Planéité - Ebenflächigkeit - Planiyud - Плоскостность	UNI EN ISO 10545/2	± 0,26% / ± 1,5 mm						
	ASTM C485 WARPAGE	-						
	CALIBRATED ± 0,75% (MAX ± 0,09 IN)	-						
	RECTIFIED ± 0,40% (MAX ± 0,05 IN-SIZE ≤ 60 cm) (MAX ± 0,07 IN-SIZE > 60 cm)	± 0,25% (MAX ± 0,05 IN-SIZE ≤ 60 cm) (MAX ± 0,07 IN-SIZE > 60 cm)						
<b>ASSORBIMENTO D'ACQUA (VALORE MEDIO IN %)</b> Water absorption (Average value expressed in %) - Absorption d'eau (Valeur moyenne en %) Wasseraufnahme (Durchschnittswert in %) - Absorción de agua (Valor medio en %) Поглощение воды	UNI EN ISO 10545/3 ≤ 0,5 %	CONFORME						
	ASTM C373	COMPLIANT						
<b>RESISTENZA ALLA FLESSIONE</b> Modulus of rupture - Resistance a la flexion - Biegefestigkeit Resistencia a la flexion - Прочность на изгиб	UNI EN ISO 10545/4	≥ 50 N/mm <sup>2</sup>						
	<b>FORZA DI ROTTURA</b> Breaking strength - Résistance à la rupture - Bruchlast Resistencia a la rotura - Разрывное усилие	UNI EN ISO 10545/4 ASTM C648	≥ 2000 N 700 Lbs					
<b>RESISTENZA ALL'ABRASIONE PROFONDA</b> Abrasion resistance - Résistance à l'abrasion profonde - Tiefenabriebfestigkeit Resistencia a la abrasion profunda - Стойкость к глубокому истиранию	UNI EN ISO 10545/6 ASTM C1243	CONFORME (CEMENTI) COMPLIANT (CEMENTI)						
	<b>RESISTENZA ALL'ABRASIONE - PEI</b> Surface abrasion PEI - Résistance à l'abrasion PEI - Abriebfestigkeit PEI Resistencia a la abrasion PEI - Стойкость к истиранию PEI	UNI EN ISO 10545/7 ASTM C1027	PEI 3/5 (LEGNI) III/IV (LEGNI)					
<b>RESISTENZA AL GELO</b> Frost resistance - Résistance au gel - Frostbeständigkeit Resistencia a las heladas - Морозостойкость	UNI EN ISO 10545/12 ASTM C1026	CONFORME UNAFFECTED						
	<b>RESISTENZA CHIMICA</b> <b>AD ALTE E BASSE CONCENTRAZIONI DI ACIDI E BASI</b> Chemical resistance to high and low acid and basic concentrations Résistance chimique aux hautes et basses concentrations d'acides et de bases Chemikalienfestigkeit bei hohen und niedrigen Konzentrationen von Säuren und Basen Resistencia química con concentraciones altas y bajas de ácidos y bases Химическая стойкость к высоким и низким концентрациям кислот и щелочей	UNI EN ISO 10545/13 ASTM C-650	<table border="1"> <thead> <tr> <th>CEMENTI</th> <th>LEGNI</th> </tr> </thead> <tbody> <tr> <td>UA - ULA - UHA</td> <td>GA - GLA - GHA</td> </tr> <tr> <td>UNAFFECTED</td> <td>UNAFFECTED</td> </tr> </tbody> </table>	CEMENTI	LEGNI	UA - ULA - UHA	GA - GLA - GHA	UNAFFECTED
CEMENTI		LEGNI						
UA - ULA - UHA	GA - GLA - GHA							
UNAFFECTED	UNAFFECTED							
<b>RESISTENZA ALLE MACCHIE</b> Stain resistance - Résistance aux taches - Fleckenbeständigkeit Resistencia a las manchas - Стойкость к образованию пятен	UNI EN ISO 10545/14 CTI 81-7D	5 NO EVIDENT VARIATION						
	<b>COEFFICIENTE DI ATTRITO</b> Slip resistance - Coefficient de glissement - Rutschfestigkeit Barfußbereich Coeficiente de atrito medio - Коэффициент трения	DIN 51130	<table border="1"> <thead> <tr> <th>CEMENTI</th> <th>LEGNI</th> </tr> </thead> <tbody> <tr> <td>R11</td> <td>R11</td> </tr> </tbody> </table>	CEMENTI	LEGNI	R11	R11	
CEMENTI		LEGNI						
R11		R11						
DIN 51097		B (A+B) / B (A+B)						
ANSI A 137.1 - 2012 DCOF (SECTION 9.6)	WET ≥ 0,42 / WET ≥ 0,42							
B.C.R.A.	≥ 0,40 / ≥ 0,40							

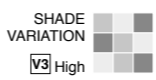
Per maggiori chiarimenti sui dati tecnici e sulla garanzia consultare il catalogo generale in vigore. - For further information on technical specifications, please consult our up-dated general catalogue. - Pour toutes informations supplémentaires sur les données techniques et sur les garanties, veuillez consulter le catalogue général en vigueur. - Für weitere Informationen über technische Daten und Garantie beziehen sie sich bitte auf den aktuellen Gesamtkatalog. - Para ulteriores informaciones sobre los datos técnicos y la garantía, vease el catalogo general en vigor. - Более подробную информацию о технических данных и гарантии смотрите в действующем сводном катал.



7,5%



放射性水平A类



Articolo Item Reference Artikel Artículo Артикула	Formato (cm) Size (cm) Format (cm) Format (cm) Тamaño (cm) Формат (cm)	Spessore (mm) Thickness (mm) Épaisseur (mm) Stärke (mm) Espesor (mm) Толщина (mm)	Pz. x Mq. Pieces x Sqm Pcs / M <sup>2</sup> Stk. x Qm Pzs x Mc. Шт. x Кв.М.	Pz. x Scat. Pieces x Box Pcs / Bte Stk. x Krt. Pzs x Caja Шт. x Кор.	Mq. x Scat. Sqm x Box M <sup>2</sup> / Bte Qm x Krt. Mc. x Caja Кв.М. x Кор.	Peso x Scat. (Kg) Weight x Box (Kg) Poids / Bte (Kg) Gewicht x Krt. (Kg) Peso x Caja (Kg) Вес x Кор. (Kg)	Scat. x Pal. Boxes x Pal. Bte / Pal. Krt. x Pal. Cajas x Pal. Кор. x Подд.	Mq. x Pal. Sqm x Pal. M <sup>2</sup> / Pal. Qm x Pal. Mc. x Pal. Кв.М x Подд.	Peso x Pal. (Kg) Weight x Pal. (Kg) Poids / Pal. (Kg) Gewicht x Pal. (Kg) Peso x Pal. (Kg) Вес x Подд (Kg)
601R/M/S_R	60x60	10	2,78	3	1,080	25,00	40	43,20	1000
981R/M/S_R	60x120	10	1,39	2	1,440	35,00	22	31,68	770
541S_R	20x120	10	4,17	4	0,960	23,50	36	34,56	846
540D_R	20x120	10	4,17	4	0,960	23,50	36	34,56	846
530D_R	15x120	10	5,56	6	1,080	22,40	32	34,56	717
I301M_R	30x30	10	11,11	5	0,450	10,50	60	27,00	630

A Brand of Emilceramica S.r.l. a socio unico

UNI EN ISO 9001:2008  
UNI EN ISO 14001:2004  
BS OHSAS 18001:2007  
UNI CEI EN ISO 50001:2011

CONFINDUSTRIA  
PER LA SOSTENIBILITÀ

CERTQUALITY  
E MEMBRO DELLA  
FEDERAZIONE CISQ



Viva Made is a brand of Emilceramica S.r.l. a socio unico	Sede commerciale/amministrativa
info@emilceramicagroup.it emilgroup.it/viva	Via Ghiarola Nuova, 33/29 - 41042 Fiorano Modenese (Mo) - Italy T +39 0536 998701 F +39 0536 998702

